

TAKE CONTROL OF YOUR MANUFACTURING PROCESS with Production - Preparation - Process = 3P Method

Production Preparation Process (3P) is one part of an overall Lean design approach that includes the rapid testing of ideas and the embedding of Lean manufacturing principles into process and product design. It's one of the most powerful and advanced manufacturing tool. It is typically used by organizations that have experience implementing other lean methods. Whereas kaizen and other lean methods take a production process as a given and seek to make improvements, the Production Preparation Process (3P) focuses on eliminating waste through product and process design. The 3P method finds the best manufacturing process.

Now easier to implement!

Thanks to Prodesol SmarteModeler – PLM Estimator for General Assembly.

PRODeSOL SMARTeMODELER is a one step tool for creating:

- Quotes, (labor and parts)
- Advanced Cost Analysis
- mBOM (Manufacturing BOM)
- Detailed manufacturing processes
- Optimized routing
- Assembly Lines with optimization and line balancing tools
- Methods (Visual work instructions automatic creation)

Manufacturing process becomes critical in today's highly competitive market. A good process is essential but an optimized process will produce competitive advantages. PRODeSOL SMARTeMODELER-GA is the complete tool for high mix assembly of all levels of complexity. The system will identify bottlenecks before it reaches manufacturing and no details, parts or steps will be left out.

The immediate results are:

- MAXIMIZED EFFICIENCY
- 100% QUALITY
- REDUCED MANUFACTURING COSTS
- INCREASED THROUGHPUT

CONTINUOUS IMPROVEMENT

Creating new process is usually well controlled.

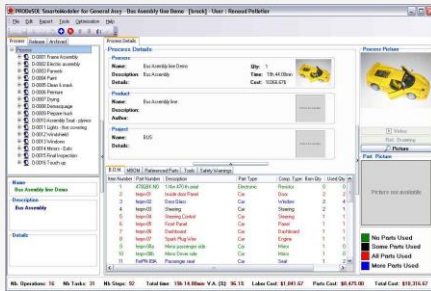
What about updating and improving existing process? Is it a challenge in your organization?

It becomes easy with Prodesol SmarteModeler-GA.

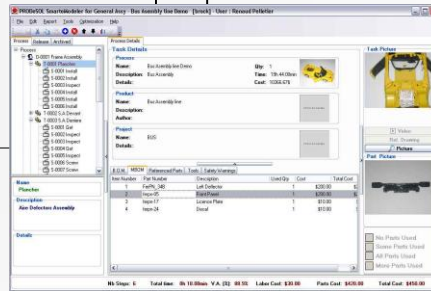
It manages complete Product Lifecycle Management such as revisions, engineering changes, CAPA, documents, BOM, mBOM, standards, parts and much more. The software handles complex process definition and it easily analyzes models to find optimized solutions.

Measuring is the first step to improvement. Use the SmarteMES for Real Time production data collection.

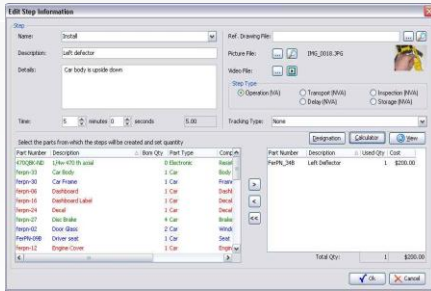
Product Screenshots



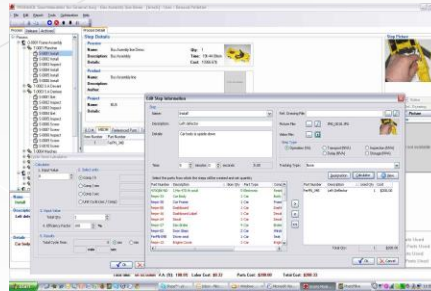
Overall Process



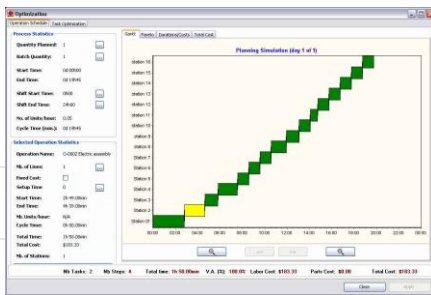
mBOM Structure



Step Definition



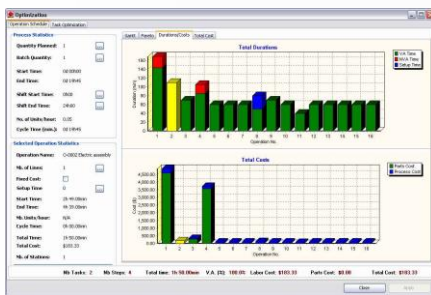
Detailed Step Definition with calculator



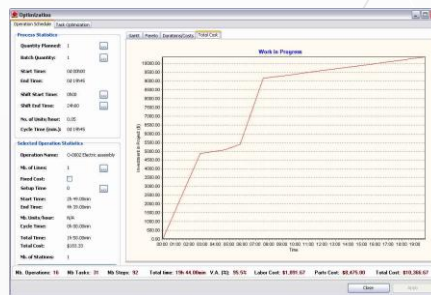
Duration & routing analysis with Gantt



Pareto Analysis



Duration and Cost Analysis



Process Total Cost Analysis



Line Balancing



Automatic Work Instruction Generation

Look at your process in a glance. Labor, parts and resources analysis are easily performed. Complex processes become easily optimized for lean manufacturing.

Benefits:

- ✓ Reliable advanced quote system.
- ✓ Accurate mBOM management.
- ✓ Maximized work center load.
- ✓ Maximized assembly process reliability.
- ✓ Maximized value added activities.
- ✓ Quick and Easy changes and improvements.
- ✓ Quick Bottlenecks evaluation and reduction.
- ✓ Maximized workflow.
- ✓ Error free electronic work instructions.
- ✓ Reduce operator training and learning period.

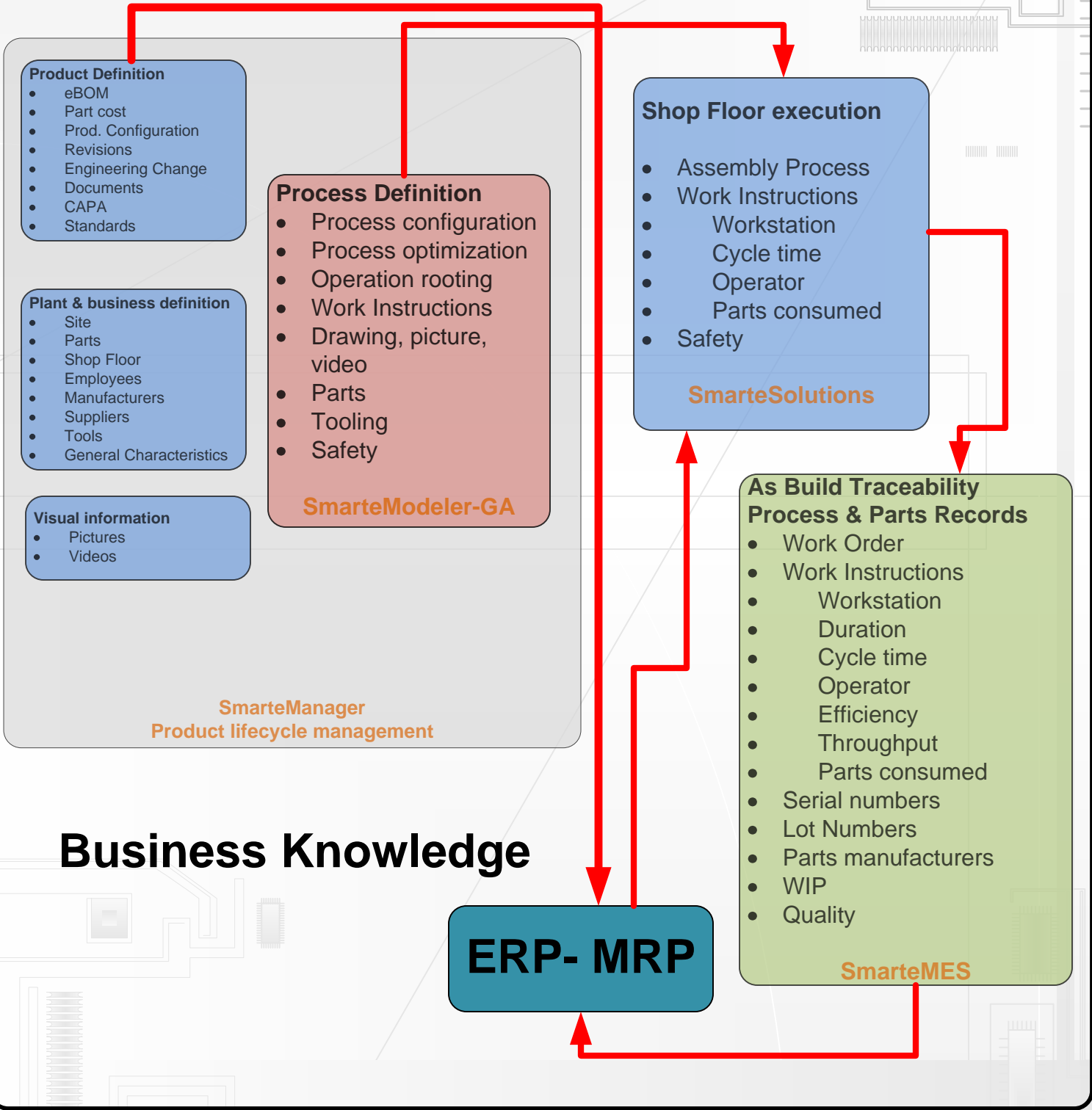
Features:

- ✓ Advanced product design tools.
- ✓ Based on value added activities.
- ✓ mBOM management.
- ✓ Department based cost.
- ✓ Part management (consumed and referenced).
- ✓ Tool usage & Safety Control.
- ✓ Operation (phase) Planning with Gantt.
- ✓ Operation (phase) routing.
- ✓ Cost Analyzer, Parts & Labor.
- ✓ Pareto analysis.
- ✓ Task line balancing.
- ✓ Reusable template.
- ✓ Excel Reports.
- ✓ Step picture, drawing and video.
- ✓ Automatic work instructions creation.
- ✓ Server Database

System requirements

MySQL Database server.
 PC Pentium P4 or Equivalent
 Microsoft Windows XP or Vista
 512 MB Ram (minimum)
 Super VGA (800 x600) minimum.
 1024 x 768, 19" monitor with Higher resolution (recommended) for higher efficiency

Prodesol Products Configuration



Business Knowledge

ERP- MRP