

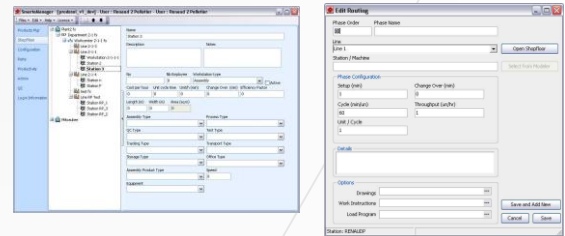
## OPTIMIZE SHOP FLOOR OPERATIONS. REAL TIME PRODUCTION AND QUALITY CONTROL.

What is Prodesol WIP Monitor?

WIP Monitor is an easy to install tool to view your shop floor operation in real time.

### System Setup

- A. Configure your shop floor
  - Map computers to station name
- B. Define Products Routing (option to import from ERP or MRPII)
  - Phase
    - Assembly line
    - Setup duration
    - Cycle Time
    - Change over duration
  - Options: Drawings or documents, Work Instructions, Machine program



### Four Easy Steps

1. Create a Work Order (option to import from ERP or MRPII)
  - Select product
    - Product code
    - Schedules start date
    - Quantity to build
    - Unit per cycle
2. WO is available on MyWorkStation
  - Start MyWorkStation application
  - Log operator
    - Select shop floor station if computer not mapped
  - Select WO
  - Select phase
  - Select status
    - Run, Setup, Pause, Change Over, Stop.
    - Run Select Next cycle when one cycle is completed
    - Multiple units can be built in one cycle.
3. Monitor you production in Real Time and record production data.
  - What? Where?, Who? When? How long?
  - WO in progress
    - Phase in progress
    - Quantity done – left
    - Cycle time
    - Setup and change over duration
    - Throughput
  - Compare to planned time
  - Apply corrective actions
4. Complete and Close WO
  - View reports for analysis and traceability

